



**CROSBY &  
ASSOCIATES, INC.**

**FOR SALE**

# PRIME DEVELOPMENT LAND

86± Acres in Haines City, Florida

**Price: \$2.5 Million**

This prime development land that hasn't been available for purchase since the 1950s. Proximity to the I-4 corridor and multiple cities makes it ideal for development.

**LAKE FRONTAGE**  
3,000± feet on beautiful Lake Hamilton

**HIGHWAY FRONTAGE**  
900± feet on US Hwy 27

**CANAL FRONTAGE**  
900± feet on boat access canal

*2,100± Acre Lake Hamilton*



*US Hwy 27 Frontage*



*Canal*



**PROPERTY DETAILS**

Current Citrus Grove with 12" Well & Jet Irrigation

House, 4" Well & Barn

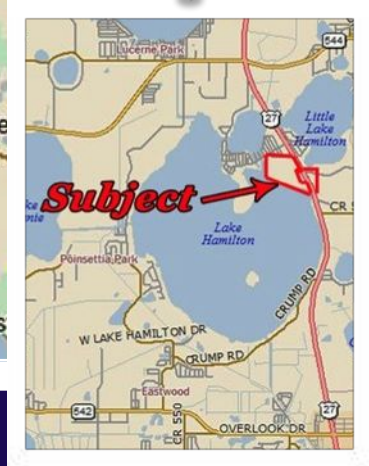
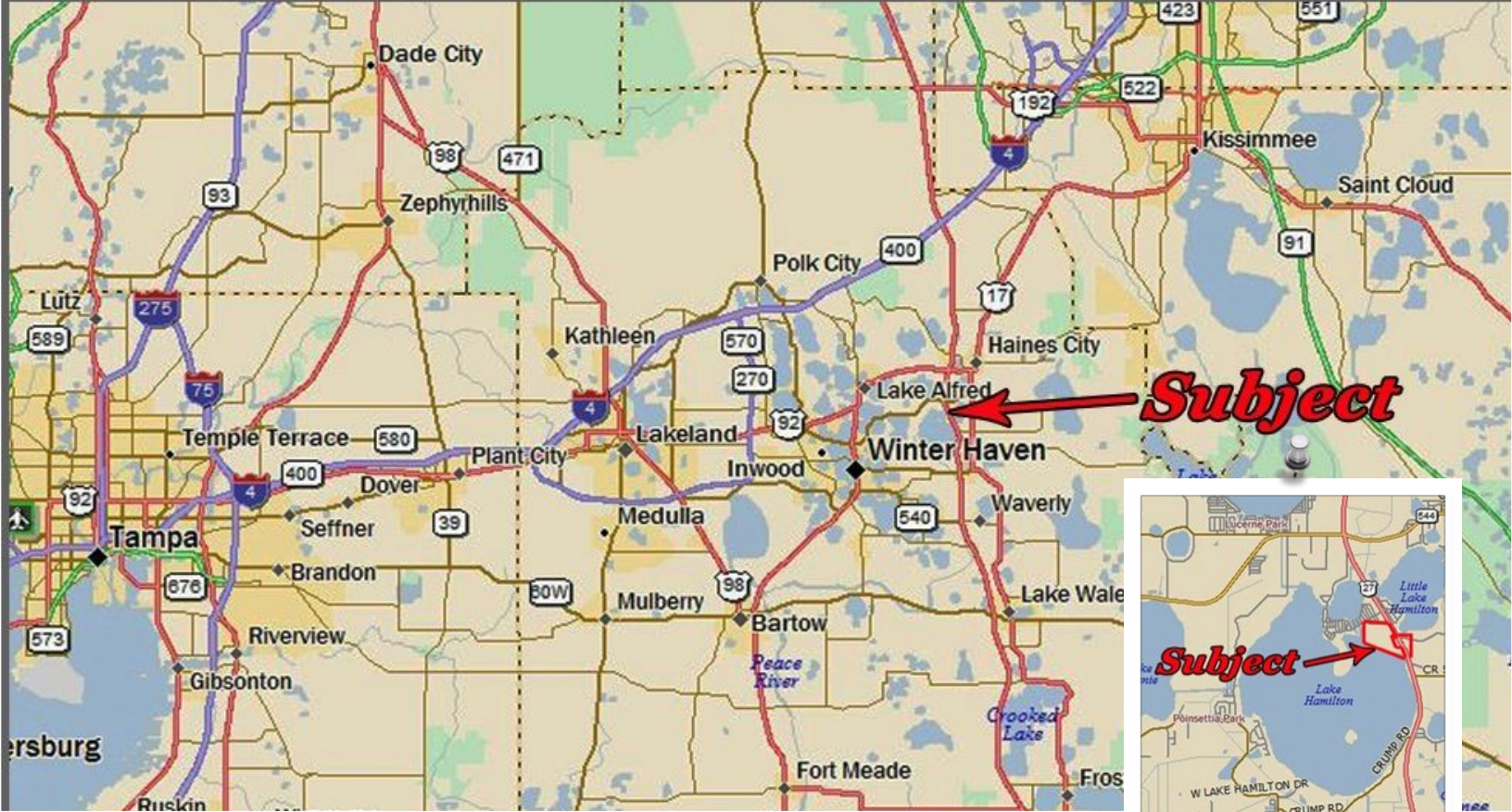
87± Gross Acres

75± Upland Acres

2014 Taxes: \$2,916.23



Offered By **CHARLES C. "SQUIRE" SMITH, ALC**  
863.559.0307 [squire@crosbydirt.com](mailto:squire@crosbydirt.com)



# Property Location

The property is located 18 miles south of the I-4 corridor with ample frontage on US Hwy 27.

**Address:**  
4362 US Hwy 27 South  
Haines City, FL 33844

**Coordinates:**  
28.06209, -81.638407



*All information contained herein has been obtained from sources deemed reliable. However, Crosby & Associates, Inc. or any agent thereof cannot guarantee this information. We are not responsible for errors, omissions, prior sale, change in price, easements, zoning changes or withdrawal of property from the market without notice.*

## Crosby & Associates, Inc.

Land Specialists: Agriculture & Commercial Real Estate

505 Avenue A NW, Suite 306  
Winter Haven, FL 33881  
862.293.5600

225 West Main Street  
Tavares, FL 32778  
352.343.1464

52 Commerce Street  
Hawkinsville, GA 31036  
800.320.3477



[www.crosbydirt.com](http://www.crosbydirt.com)