

24.47 Acres for Truck Stop Hwy I-95 & Stuckway Rd in Scottsboro, FL

**PRICE
REDUCED**

\$1,350,000

Zoned Tourist Commercial

High Visibility

High Traffic

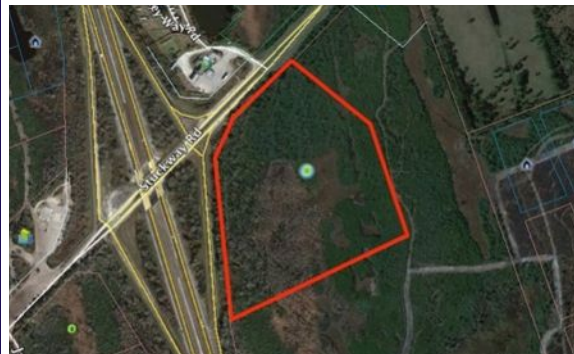
I-95 Frontage

2013 Taxes \$3,219.42

Ideal Location For:

- Truck Stop
- Gas Station
- Fast Food
- Hotel

Area will require well & septic system.

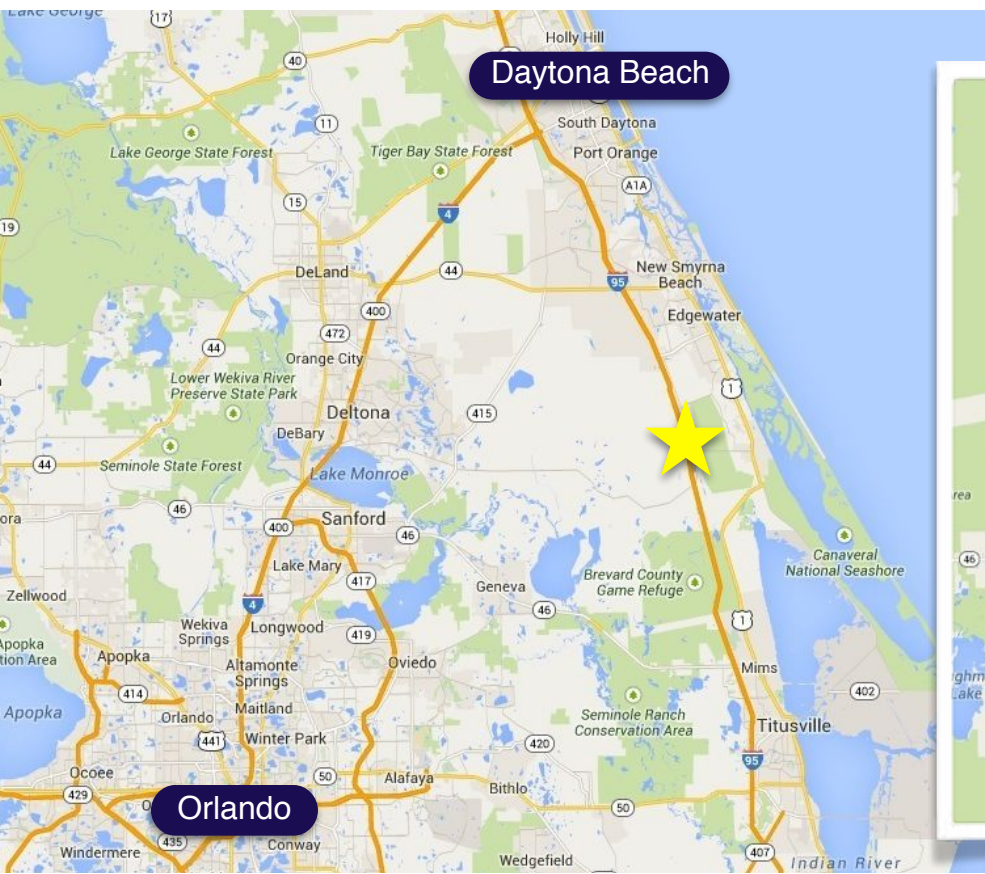


This is the last exit north-bound in Brevard County before entering Volusia County.

- Located on Exit 231
- Traffic Count on I-95:
52,500 Cars Per Day
10,345 Trucks Per Day
- SE Quadrant of Intersection
- Left In/Left Out onto SR5A
- Frontage: 1,200 ft on I-95
- Frontage: 520 ft on SR 5A
- Approved 125,000 Sq Ft Commercial
- Parcel ID:
20G-34-41-00-00384.0-0000.00

863.293.5600
www.crosbydirt.com





DRIVING DIRECTIONS
 Located at the southeast corner of Interstate 95 and State Road 5A (Stuckway Rd.), exit 231 just north of Titusville.

- ★ 42 Miles North to Nearest Truck Stop
- ★ 16 Miles South to Nearest Truck Stop
- ★ Easy On/Off for Cars & Trucks



OFFERED BY

Ben Crosby, CCIM, ALC

ben@crosbydirt.com cell: 863.412.8977

Crosby & Associates, Inc.

crosbydirt.com



All information contained herein has been obtained from sources deemed reliable. However, Crosby & Associates, Inc. or any agent thereof cannot guarantee this information. We are not responsible for errors, omissions, prior sale, change in price, easements, zoning changes or withdrawal of property from the market

505 Avenue A NW, Suite 306
 Winter Haven, FL 33881
 862.293.5600

225 West Main Street
 Tavares, FL 32778
 352.343.1464

52 Commerce Street
 Hawkinsville, GA 31036
 800.320.3477