



# Demographic and Income Comparison Profile

Conroy Chip's  
1010 US Highway 17 92 N, Davenport, Florida, 33837  
Rings: 1, 5, 10 mile radii

Latitude: 28.17109  
Longitude: -81.59653

	1 mile	5 mile	10 mile
<b>Census 2010 Summary</b>			
Population	1,838	37,544	148,288
Households	643	13,004	51,865
Families	471	9,735	39,632
Average Household Size	2.77	2.87	2.85
Owner Occupied Housing Units	486	9,211	38,360
Renter Occupied Housing Units	157	3,793	13,505
Median Age	43.0	36.9	38.0
<b>2014 Summary</b>			
Population	1,939	39,790	158,145
Households	678	13,695	54,607
Families	492	10,183	41,520
Average Household Size	2.77	2.89	2.89
Owner Occupied Housing Units	482	9,164	38,310
Renter Occupied Housing Units	196	4,531	16,297
Median Age	43.3	37.7	38.9
Median Household Income	\$46,149	\$39,630	\$42,193
Average Household Income	\$53,700	\$49,312	\$53,274
<b>2019 Summary</b>			
Population	2,206	43,292	174,353
Households	772	14,843	59,702
Families	558	10,977	45,251
Average Household Size	2.78	2.90	2.91
Owner Occupied Housing Units	543	9,851	41,448
Renter Occupied Housing Units	228	4,991	18,254
Median Age	44.0	38.4	39.0
Median Household Income	\$51,979	\$46,892	\$50,048
Average Household Income	\$59,613	\$55,466	\$60,084
<b>Trends: 2014-2019 Annual Rate</b>			
Population	2.61%	1.70%	1.97%
Households	2.63%	1.62%	1.80%
Families	2.55%	1.51%	1.74%
Owner Households	2.41%	1.46%	1.59%
Median Household Income	2.41%	3.42%	3.47%

Source: U.S. Census Bureau, Census 2010 Summary File 1. Esri forecasts for 2014 and 2019.



# Demographic and Income Comparison Profile

Conroy Chip's  
 1010 US Highway 17 92 N, Davenport, Florida, 33837  
 Rings: 1, 5, 10 mile radii

Latitude: 28.17109  
 Longitude: -81.59653

2014 Households by Income	1 mile		5 mile		10 mile	
	Number	Percent	Number	Percent	Number	Percent
<\$15,000	84	12.4%	2,232	16.3%	7,014	12.8%
\$15,000 - \$24,999	82	12.1%	1,686	12.3%	6,970	12.8%
\$25,000 - \$34,999	80	11.8%	1,984	14.5%	7,454	13.7%
\$35,000 - \$49,999	116	17.1%	2,416	17.6%	10,289	18.8%
\$50,000 - \$74,999	198	29.2%	3,027	22.1%	12,559	23.0%
\$75,000 - \$99,999	65	9.6%	1,397	10.2%	5,588	10.2%
\$100,000 - \$149,999	35	5.2%	666	4.9%	3,205	5.9%
\$150,000 - \$199,999	9	1.3%	138	1.0%	807	1.5%
\$200,000+	9	1.3%	148	1.1%	721	1.3%
Median Household Income	\$46,149		\$39,630		\$42,193	
Average Household Income	\$53,700		\$49,312		\$53,274	
Per Capita Income	\$19,392		\$17,022		\$18,411	

2019 Households by Income	1 mile		5 mile		10 mile	
	Number	Percent	Number	Percent	Number	Percent
<\$15,000	86	11.1%	2,223	15.0%	6,970	11.7%
\$15,000 - \$24,999	64	8.3%	1,297	8.7%	5,330	8.9%
\$25,000 - \$34,999	71	9.2%	1,701	11.5%	6,428	10.8%
\$35,000 - \$49,999	130	16.8%	2,611	17.6%	11,071	18.5%
\$50,000 - \$74,999	251	32.5%	3,736	25.2%	15,602	26.1%
\$75,000 - \$99,999	96	12.4%	1,979	13.3%	7,911	13.3%
\$100,000 - \$149,999	47	6.1%	875	5.9%	4,149	6.9%
\$150,000 - \$199,999	14	1.8%	208	1.4%	1,194	2.0%
\$200,000+	13	1.7%	212	1.4%	1,047	1.8%
Median Household Income	\$51,979		\$46,892		\$50,048	
Average Household Income	\$59,613		\$55,466		\$60,084	
Per Capita Income	\$21,348		\$19,065		\$20,578	

**Data Note:** Income is expressed in current dollars.

**Source:** U.S. Census Bureau, Census 2010 Summary File 1. Esri forecasts for 2014 and 2019.



# Demographic and Income Comparison Profile

Conroy Chip's  
 1010 US Highway 17 92 N, Davenport, Florida, 33837  
 Rings: 1, 5, 10 mile radii

Latitude: 28.17109  
 Longitude: -81.59653

2010 Population by Age	1 mile		5 mile		10 mile	
	Number	Percent	Number	Percent	Number	Percent
Age 0 - 4	116	6.3%	2,903	7.7%	9,992	6.7%
Age 5 - 9	109	5.9%	2,688	7.2%	10,498	7.1%
Age 10 - 14	101	5.5%	2,515	6.7%	10,906	7.4%
Age 15 - 19	123	6.7%	2,485	6.6%	10,688	7.2%
Age 20 - 24	105	5.7%	2,261	6.0%	8,144	5.5%
Age 25 - 34	196	10.7%	4,988	13.3%	18,094	12.2%
Age 35 - 44	219	11.9%	4,822	12.8%	19,607	13.2%
Age 45 - 54	252	13.7%	4,676	12.5%	18,368	12.4%
Age 55 - 64	227	12.4%	4,074	10.9%	17,335	11.7%
Age 65 - 74	201	10.9%	3,652	9.7%	15,213	10.3%
Age 75 - 84	125	6.8%	1,964	5.2%	7,544	5.1%
Age 85+	64	3.5%	516	1.4%	1,899	1.3%

2014 Population by Age	1 mile		5 mile		10 mile	
	Number	Percent	Number	Percent	Number	Percent
Age 0 - 4	119	6.1%	2,948	7.4%	10,416	6.6%
Age 5 - 9	113	5.8%	2,920	7.3%	10,431	6.6%
Age 10 - 14	108	5.6%	2,665	6.7%	10,785	6.8%
Age 15 - 19	121	6.2%	2,411	6.1%	10,512	6.6%
Age 20 - 24	120	6.2%	2,434	6.1%	10,383	6.6%
Age 25 - 34	212	10.9%	5,140	12.9%	19,208	12.1%
Age 35 - 44	220	11.3%	5,056	12.7%	19,579	12.4%
Age 45 - 54	257	13.3%	4,868	12.2%	19,407	12.3%
Age 55 - 64	236	12.2%	4,374	11.0%	18,809	11.9%
Age 65 - 74	225	11.6%	4,083	10.3%	17,540	11.1%
Age 75 - 84	133	6.9%	2,242	5.6%	8,676	5.5%
Age 85+	75	3.9%	649	1.6%	2,401	1.5%

2019 Population by Age	1 mile		5 mile		10 mile	
	Number	Percent	Number	Percent	Number	Percent
Age 0 - 4	137	6.2%	3,199	7.4%	11,735	6.7%
Age 5 - 9	126	5.7%	3,093	7.1%	11,271	6.5%
Age 10 - 14	122	5.5%	3,039	7.0%	11,370	6.5%
Age 15 - 19	135	6.1%	2,654	6.1%	10,976	6.3%
Age 20 - 24	120	5.4%	2,344	5.4%	10,384	6.0%
Age 25 - 34	246	11.2%	5,399	12.5%	23,074	13.2%
Age 35 - 44	244	11.1%	5,438	12.6%	20,420	11.7%
Age 45 - 54	271	12.3%	5,128	11.8%	20,210	11.6%
Age 55 - 64	277	12.6%	5,031	11.6%	21,504	12.3%
Age 65 - 74	276	12.5%	4,500	10.4%	19,961	11.4%
Age 75 - 84	164	7.4%	2,657	6.1%	10,469	6.0%
Age 85+	88	4.0%	809	1.9%	2,978	1.7%

Source: U.S. Census Bureau, Census 2010 Summary File 1. Esri forecasts for 2014 and 2019.



# Demographic and Income Comparison Profile

Conroy Chip's  
 1010 US Highway 17 92 N, Davenport, Florida, 33837  
 Rings: 1, 5, 10 mile radii

Latitude: 28.17109  
 Longitude: -81.59653

2010 Race and Ethnicity	1 mile		5 mile		10 mile	
	Number	Percent	Number	Percent	Number	Percent
White Alone	1,332	72.5%	24,769	66.0%	98,442	66.4%
Black Alone	225	12.2%	6,287	16.7%	25,733	17.4%
American Indian Alone	4	0.2%	193	0.5%	793	0.5%
Asian Alone	32	1.7%	571	1.5%	2,907	2.0%
Pacific Islander Alone	5	0.3%	25	0.1%	160	0.1%
Some Other Race Alone	192	10.4%	4,666	12.4%	15,005	10.1%
Two or More Races	48	2.6%	1,033	2.8%	5,248	3.5%
Hispanic Origin (Any Race)	458	24.9%	13,468	35.9%	54,958	37.1%

2014 Race and Ethnicity	1 mile		5 mile		10 mile	
	Number	Percent	Number	Percent	Number	Percent
White Alone	1,341	69.2%	25,527	64.2%	101,997	64.5%
Black Alone	255	13.2%	6,776	17.0%	28,086	17.8%
American Indian Alone	4	0.2%	208	0.5%	884	0.6%
Asian Alone	37	1.9%	640	1.6%	3,213	2.0%
Pacific Islander Alone	5	0.3%	24	0.1%	166	0.1%
Some Other Race Alone	240	12.4%	5,422	13.6%	17,733	11.2%
Two or More Races	57	2.9%	1,192	3.0%	6,067	3.8%
Hispanic Origin (Any Race)	558	28.8%	15,522	39.0%	64,498	40.8%

2019 Race and Ethnicity	1 mile		5 mile		10 mile	
	Number	Percent	Number	Percent	Number	Percent
White Alone	1,462	66.2%	27,050	62.5%	109,401	62.7%
Black Alone	297	13.5%	7,336	16.9%	31,388	18.0%
American Indian Alone	6	0.3%	233	0.5%	1,001	0.6%
Asian Alone	46	2.1%	749	1.7%	3,691	2.1%
Pacific Islander Alone	5	0.2%	25	0.1%	179	0.1%
Some Other Race Alone	318	14.4%	6,472	14.9%	21,464	12.3%
Two or More Races	74	3.4%	1,426	3.3%	7,228	4.1%
Hispanic Origin (Any Race)	750	34.0%	18,863	43.6%	79,795	45.8%

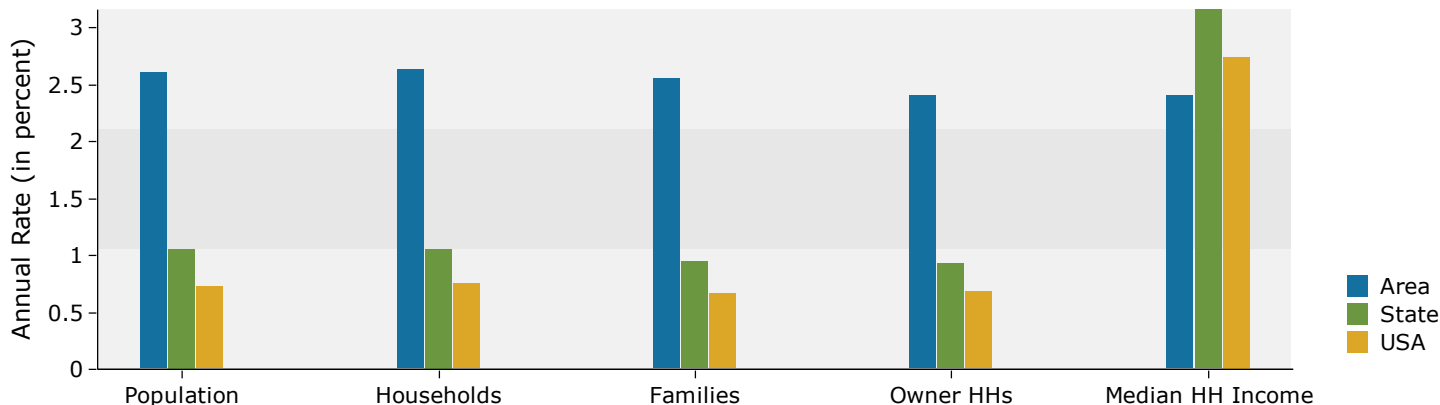
Source: U.S. Census Bureau, Census 2010 Summary File 1. Esri forecasts for 2014 and 2019.

Conroy Chip's  
 1010 US Highway 17 92 N, Davenport, Florida, 33837  
 Rings: 1, 5, 10 mile radii

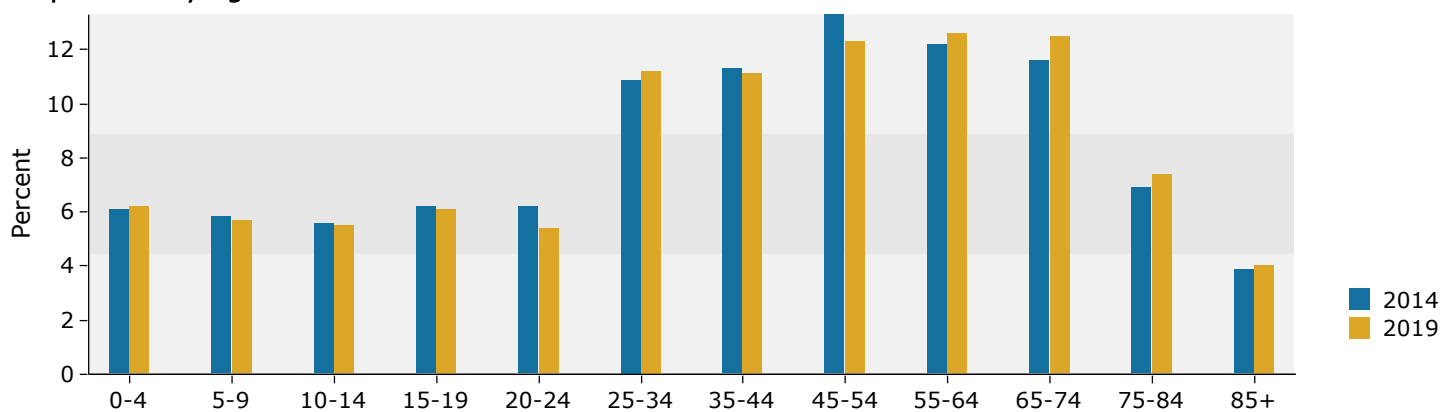
Latitude: 28.17109  
 Longitude: -81.59653

## 1 mile

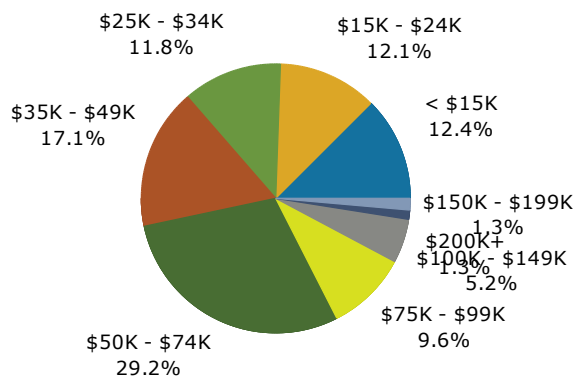
### Trends 2014-2019



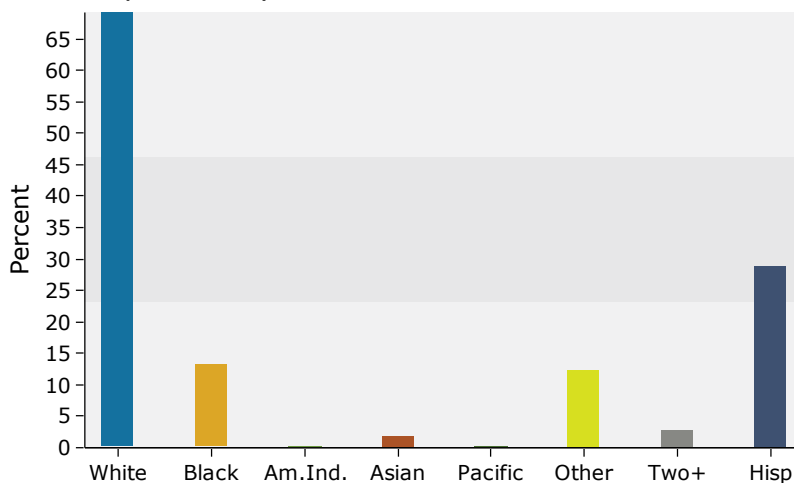
### Population by Age



### 2014 Household Income



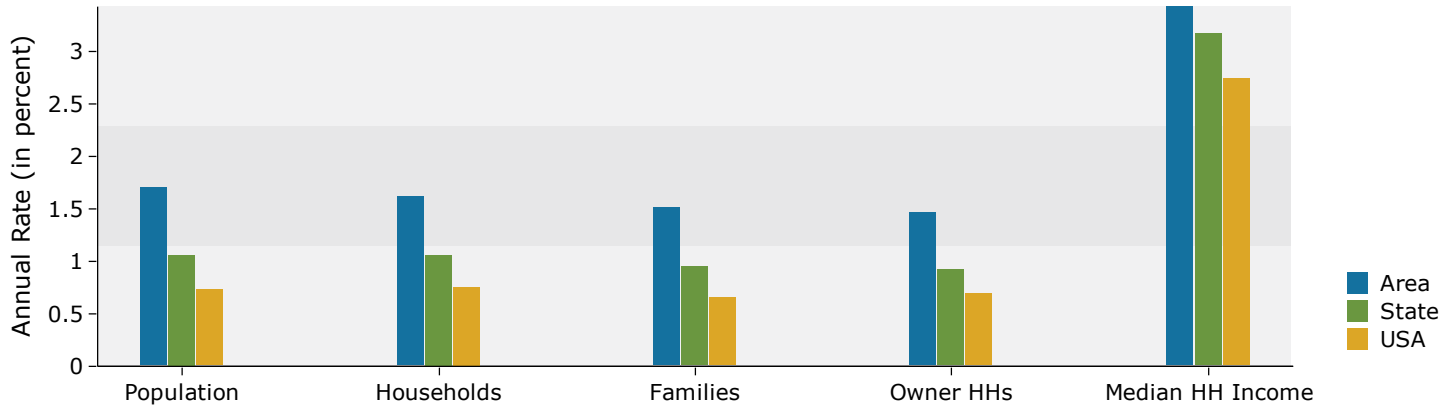
### 2014 Population by Race



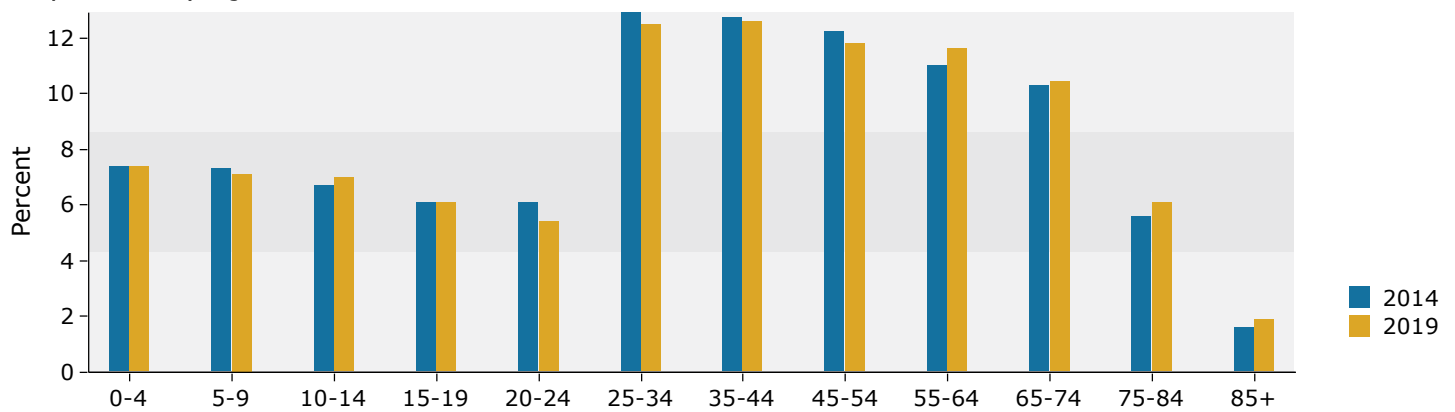
Source: U.S. Census Bureau, Census 2010 Summary File 1. Esri forecasts for 2014 and 2019.

## 5 mile

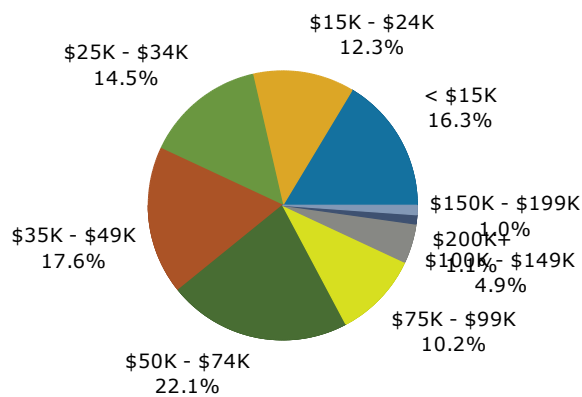
### Trends 2014-2019



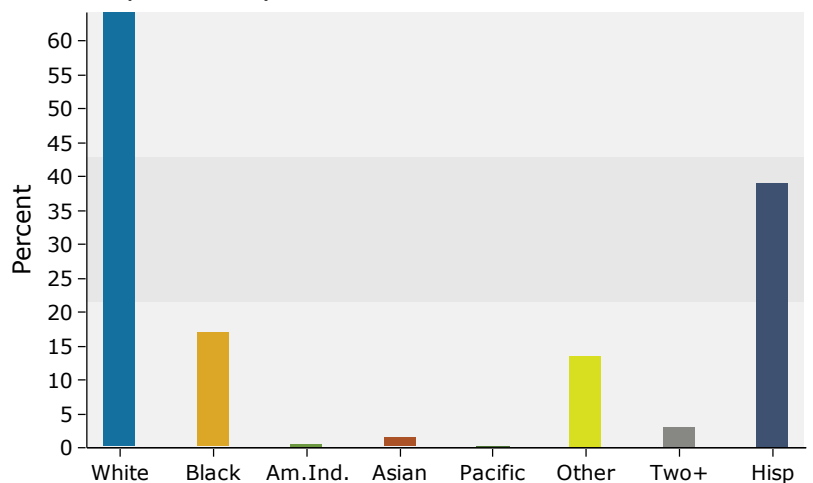
### Population by Age



### 2014 Household Income



### 2014 Population by Race



Source: U.S. Census Bureau, Census 2010 Summary File 1. Esri forecasts for 2014 and 2019.



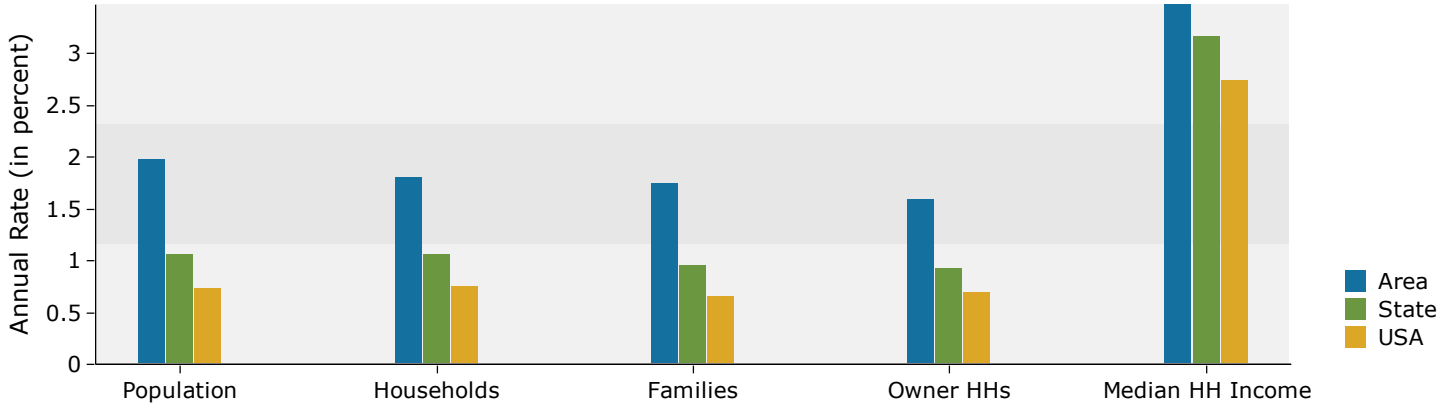
# Demographic and Income Comparison Profile

Conroy Chip's  
 1010 US Highway 17 92 N, Davenport, Florida, 33837  
 Rings: 1, 5, 10 mile radii

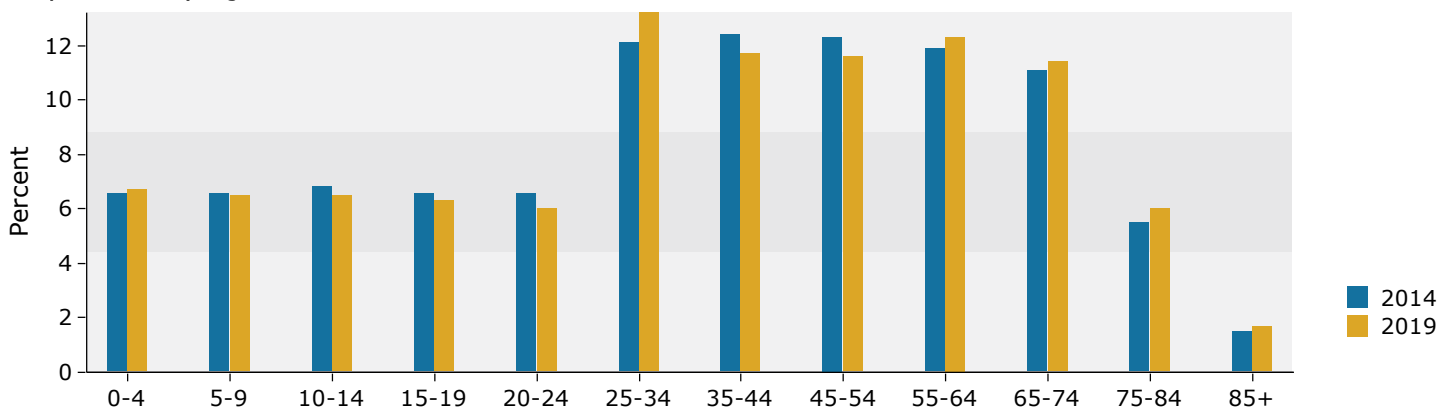
Latitude: 28.17109  
 Longitude: -81.59653

## 10 mile

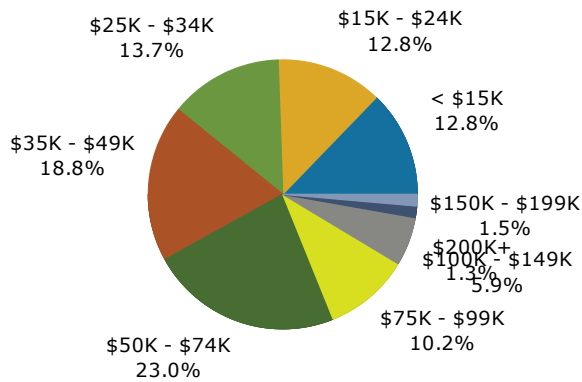
### Trends 2014-2019



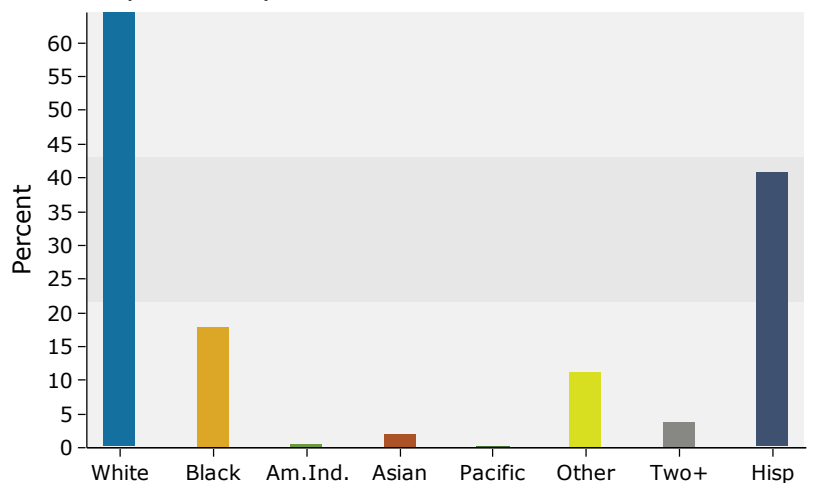
### Population by Age



### 2014 Household Income



### 2014 Population by Race



Source: U.S. Census Bureau, Census 2010 Summary File 1. Esri forecasts for 2014 and 2019.